

STANDARD NICHE



CE

ENGLISH

IMPORTANT: The instruction manual you are holding includes essential information on the safety measures to be implemented for installation and start-up. Therefore, the installer as well as the user must read the instructions before beginning installation and start-up.
Keep this manual for future reference.

To achieve optimum performance of the Housing body, follow the instructions provided below:

1. VERIFY THE CONTENTS OF THE PACKING:

The following accessories are included inside the box:

Code 00349 / 00349I

- Niche
- Bag of components

Code 00364 / 00364I / 17805

- 28887 / 23671 / 23670 / 72261**
- Niche
 - 2 watertight joint
 - Bag of components
 - Clamp

2. INSTALLATION:

- In order to clearly light a pool it is recommended to install a niche every 20 m² of water surface. In swimming pools which are especially deep, niche is required for every 25 m³ of water volume.
- In order to prevent glare, the niches should be installed so that they face away from the residence or usual view of the swimming pool.
- In the event that lighting is used in training or competition pools, the niches should be installed on the sides to prevent glare on the swimmers.
- To avoid the need to empty the pool to change the lamp, we recommend that the floodlamp be installed in areas which are accessible from the upper edge of the pool, at approximately 400-700 mm from the water surface (Fig. 1).
The method of fastening the housing to the pool wall varies depending on whether it is a floodlamp for concrete pools, prefabricated pools or panel pools.

Concrete swimming pool

To install a floodlamp in a concrete swimming pool the housing should be fixed in the wall of the swimming pool (Fig. 2). Make sure that the cable outlet of the housing remains on the upper part.

Concrete Pool with liner

Embed the niche (00364 or 28887) into the wall of the pool (Fig. 3), concrete well around the niche. Protect gasket (A) during the concreting and when this is completely dry position Liner (B).

Once the Liner has been positioned attach the flange (C) and screw it into the niche using 16 screws (D). Make sure that the cable outlet of the niche stays in the upper part.

Prefabricated Pool

To attach the niche in a prefabricated pool first a circular Ø230 mm hole must be made (Fig. 4).

Position the niche (00364 or 28887) on the outside of the pool. **Depending on the niche, an adhesive gasket must be incorporated, or not, to make it watertight.**

- If the niche incorporates the gasket, position the niche on the outside of the pool and screw it in at the bottom with the two screws (B).
- If the niche does NOT incorporate the gasket, stick to the adhesive gasket (A) to the niche, position the niche on the outside of the pool and screw it in on the inside with the two screws (B).

Make sure that the cable outlet of the niche stays in the upper part. Position the adhesive gasket on the inside of the pool and then attach the flange (C), making sure that the heads of the screws (B) previously positioned coincide with the gap reserved for them in the back of the flange. Secure the clamp (C) to the pool wall, to the inner side of the pool, and secure it to the housing body using 16 screws (D).

Panelled swimming pool with Liner

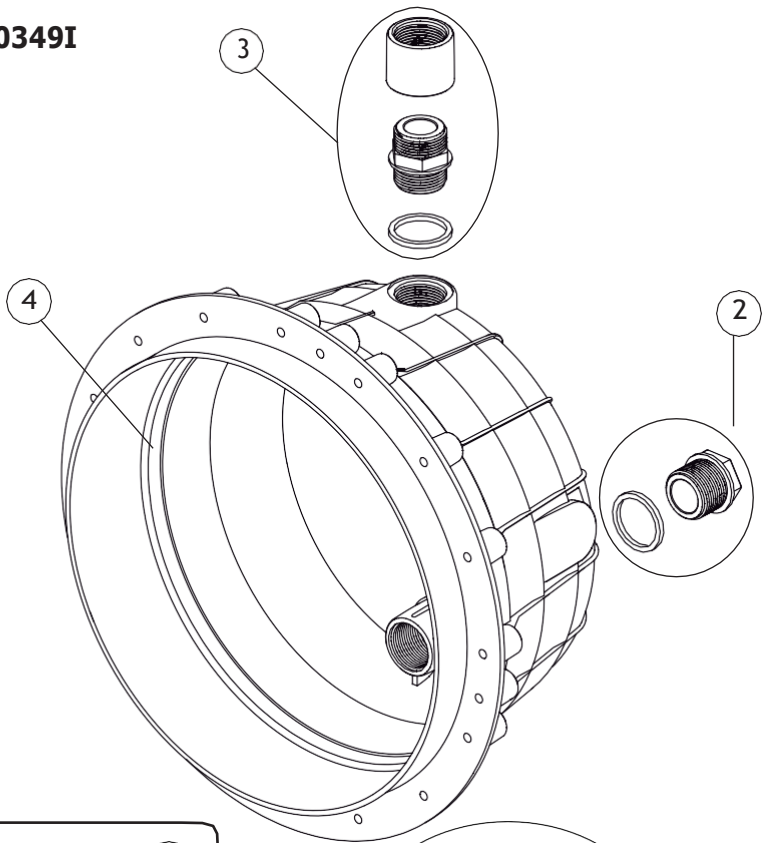
The pool can be of metal or plastic, using the template, and making a circular hole of 277 mm. diameter and 8 holes Ø4mm (Fig. 5). Place the recess, through the inside of the pool and bolt the 8 screws (A). Make sure that the cable outlet from the recess is on the upper side. Place the liner (B). Place the clamp (C) through the inside of the pool, fasten it to the recess with 16 screws (D). Cut the Liner which is inside the clamp, so that the recess is free and proceed to assemble the projector.

3. ASSEMBLY AND FUNCTIONING WARNINGS:

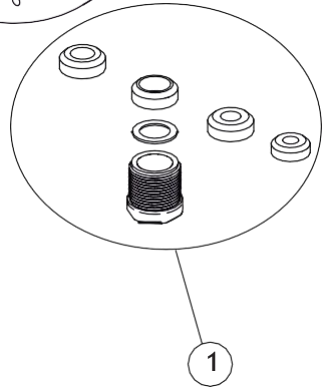
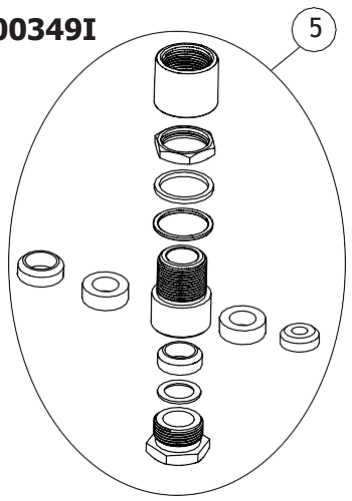
- The persons who are in charge of assembly should have the required qualifications for this type of work.
- The manufacturer is not responsible in any circumstances for assembly, installation or start-up of any electric components which have been inserted or handled at locations other than its own premises.
- This niche is resistant to pool treatments, always that the concentration values do not exceed these levels.
- Attention: Please note that the Ph of pool water always must be between 7.2 and 7.6.
- Attention: It is advisable to connect with accessories Fig. 6.

TYPE OF TREATMENT	CONCENTRATION IN WATER
Chlorine	2 mg/l
Bromine	5 mg/l

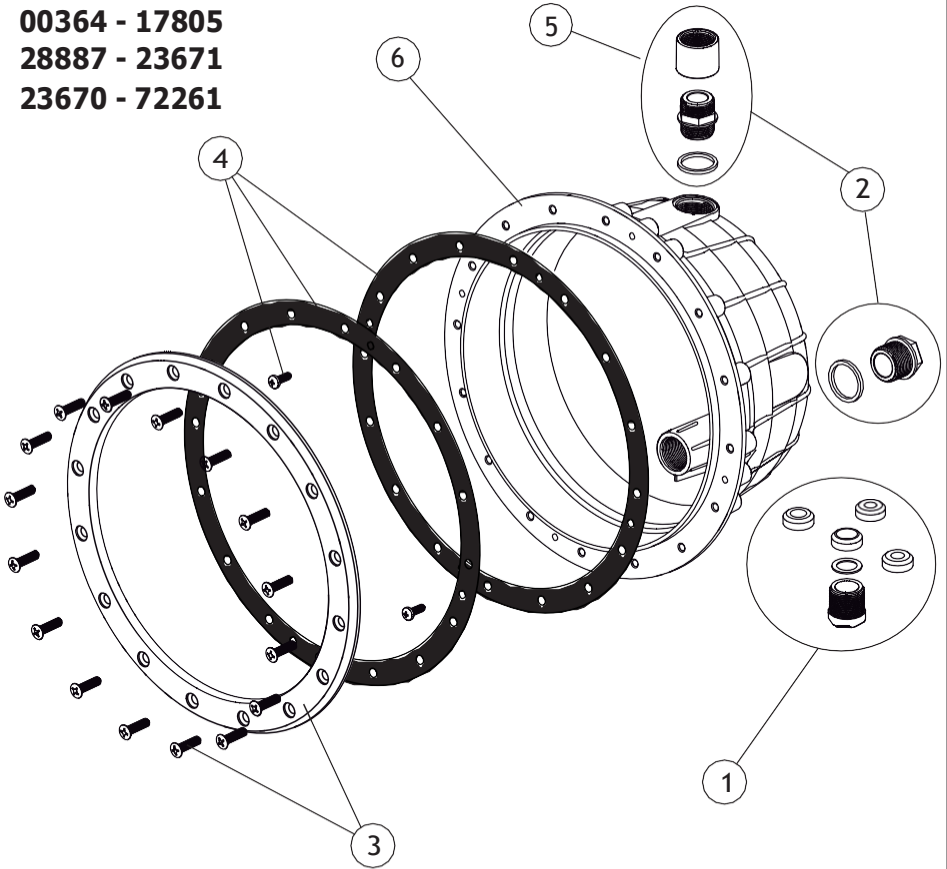
00349 / 00349I



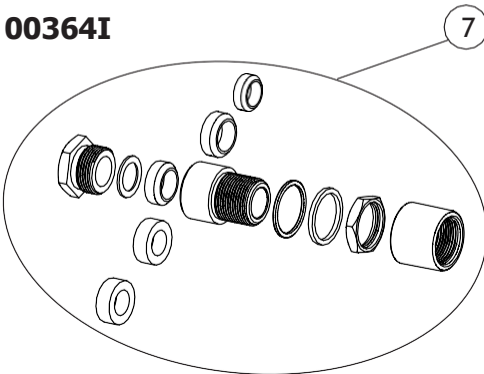
00349I



00364 - 17805
28887 - 23671
23670 - 72261

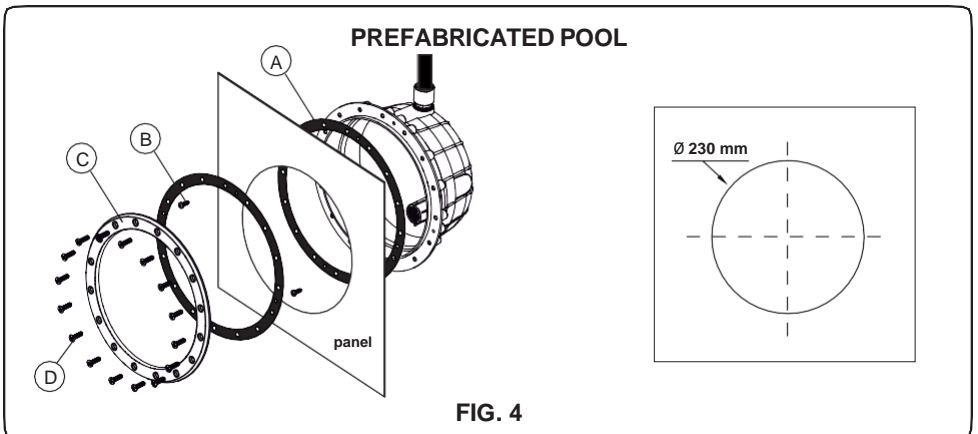
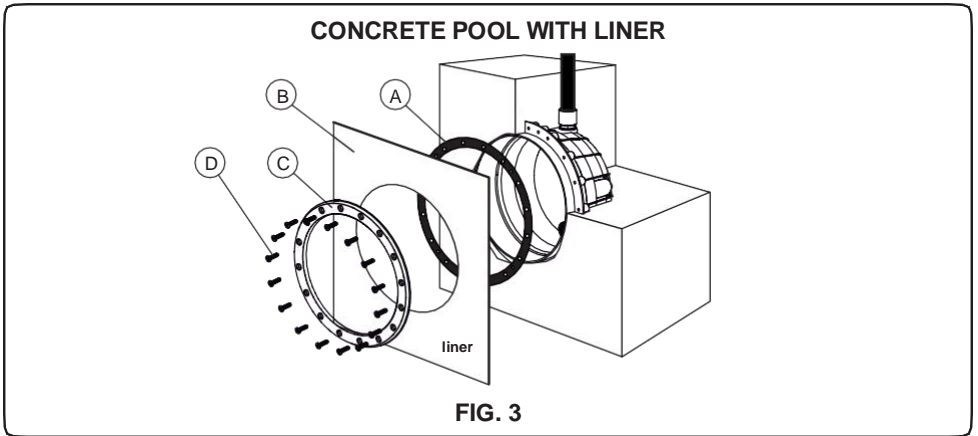
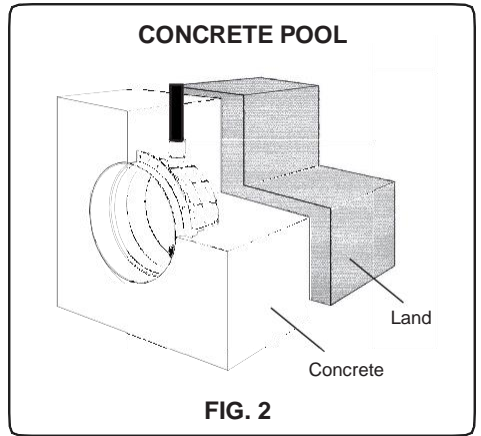
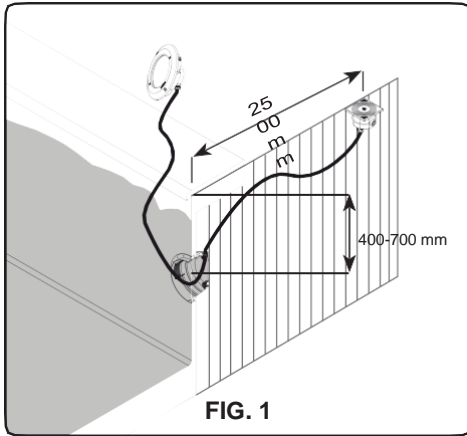


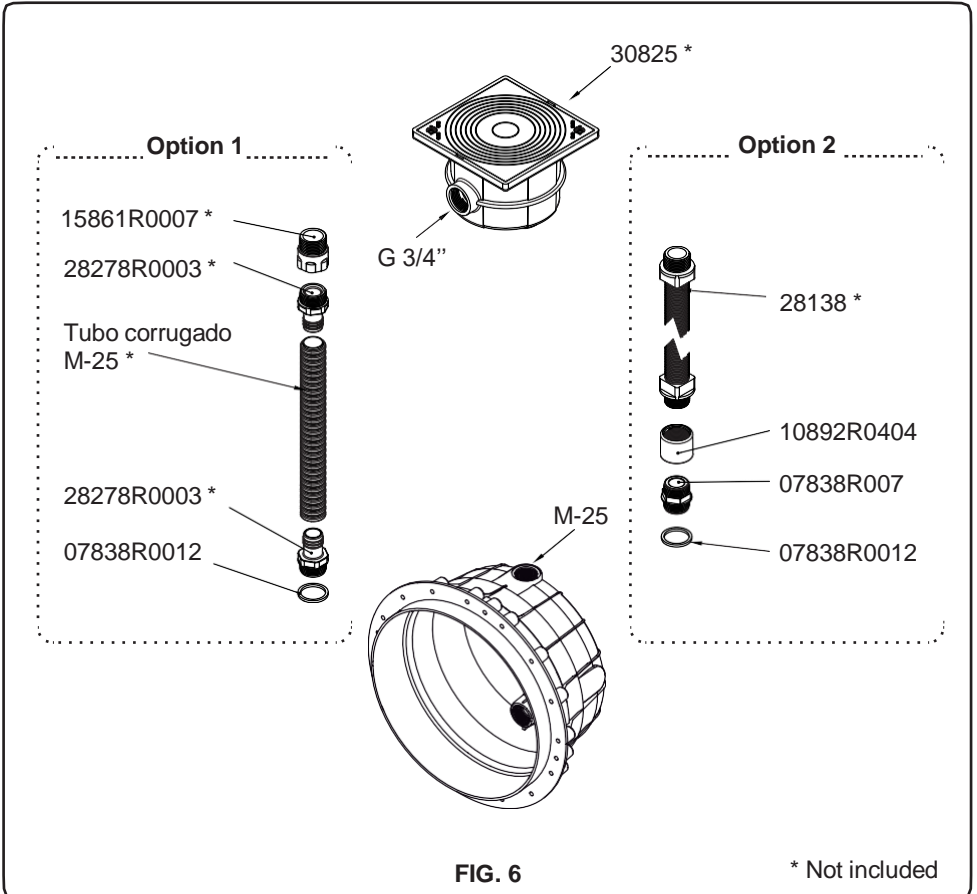
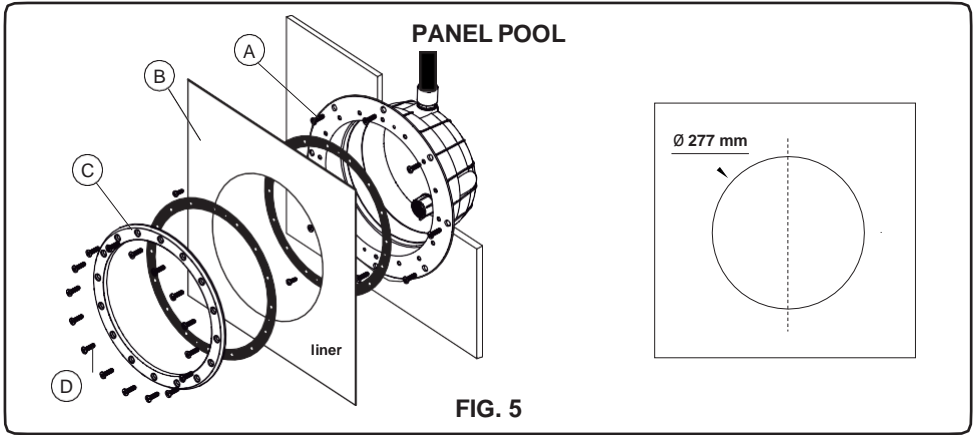
00364I



ENGLISH

N°	Code	Description	00364	00364I	17805	28887	23671	23670	72261
1	4403010801	GLAND SEAL ASSY	X		X	X	X	X	X
2	4403010313	BODY PACKING GLAND M-25	X	X	X	X	X	X	X
3	4403010901	LIGHT FIXING FLANGE	X	X	X				
3	4403012416	LIGHT FIXING FLANGE PARKER				X			
3	4403013506	LIGHT FIXING FLANGE (PARKER)						X	X
3	4403010401	LIGHT FIXING FLANGE					X		
4	4403012412	LIGHT ADHESIVE GASKET	X	X	X				
4	4403011010	LIGHT ADHESIVE GASKET				X			
4	4403010402	ADHESIVE GASKET					X	X	X
5	4403010802	MUFF M-25	X		X	X	X	X	X
6	07856R0200	BIMATERIAL METRIC PITCH HOUSING	X						
6	07667R0200	BIMATERIAL METRIC PITCH HOUSING			X				
6	07838R0006	FLOODLAMP HOUSING				X			
6	23670R0002	FLOODLAMP HOUSING						X	
6	23671R0001	PANELLED POOL HOUSING					X		
6	07667-0200I	FLOODLAMP HOUSING		X					
6	07853-0001	FLOODLAMP HOUSING							X
7	00349-0400	GLAND SEAL ASSY M-25 BRASS		X					





Made in Spain
Sacopa, S.A.U.
Pol. Ind. Poliger Sud - Sector I
17854 Sant Jaume de Llierca (Spain)

00349E201-03

- We reserve to change all or part of the articles or contents of this document, without prior notice.